

## Haverthwaite 2 – Sign placement

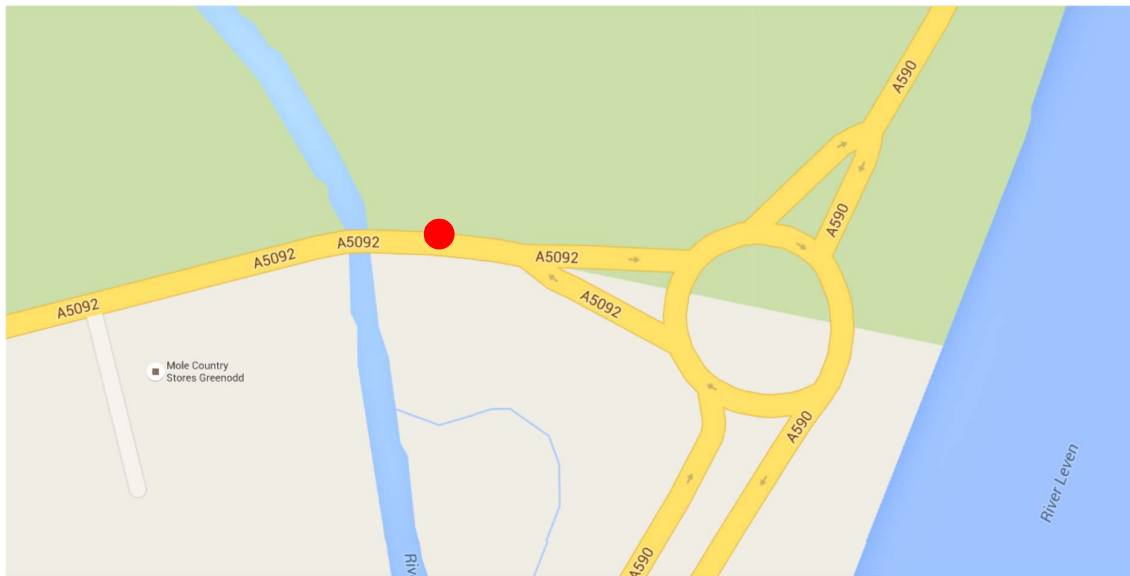
### Sign 1 - Shell garage



Sign to be tied to lamp post to give oncoming traffic notification of riders on roundabout.

## Sign 2 – Greenodd roundabout

Knocked into the ground or tied to the lamp post a good 50-100m before roundabout to give drivers good notice of riders on roundabout





**Signs 3 and 4 – Haverthwaite crossroads and on A590 100 yards before the Crossroad**

**Sign 3.** At the crossroad junction - Sign to be knocked into ground and placed so it visible to traffic coming from Cark direction and from Newby Bridge on the A590.

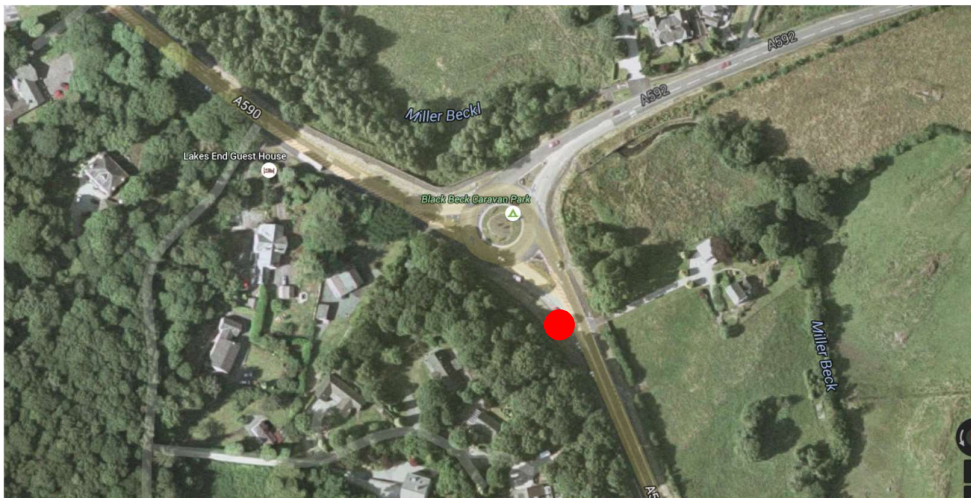


**Sign 4.** Sign knocked in ground at the Black Beck Sign or tied to sign





## Sign 5 & 6 Newby bridge roundabout



**Sign 5.** A590 on east side of Newby bridge roundabout sign tied to lamppost or knocked in ground.



**Sign 6** – On the north side of the roundabout to alert traffic heading south on the A592.

